

# Simple Present

|          |                     |    |
|----------|---------------------|----|
| <b>1</b> | Grammar Notes       | 2  |
| <b>2</b> | Multiple-Choice     | 5  |
| <b>3</b> | Fill in the Blanks  | 6  |
| <b>4</b> | Questions & Answers | 7  |
| <b>5</b> | Bingo!              | 9  |
| <b>6</b> | Pair Work           | 10 |
| <b>7</b> | Writing             | 14 |
| <b>8</b> | Find Someone Who    | 15 |

# 1 Grammar Notes

## A. Form

**Base Verb**  
(run, eat, talk, like, etc.)

**OR**

**Base Verb + -s**  
(runs, eats, talks, likes, etc.)

The simple present is formed from the base verb (the verb with no endings). We must add **-s** to a verb when the subject is *he, she, it*, a singular count noun, or a non-count noun.

### Pronouns

|               | Singular                    | Plural            |
|---------------|-----------------------------|-------------------|
| First Person  | I <b>run</b> .              | We <b>run</b> .   |
| Second Person | You <b>run</b> .            | You <b>run</b> .  |
| Third Person  | He / She / It <b>runs</b> . | They <b>run</b> . |

### Singular Count Nouns (1)

- My friend **runs**.
- My dog **sleeps** on my bed every night.

### Plural Count Nouns (2 or more)

- My classmates **run**.
- The children **play** at the park on weekends.

### Non-Count Nouns (we can't count how many)

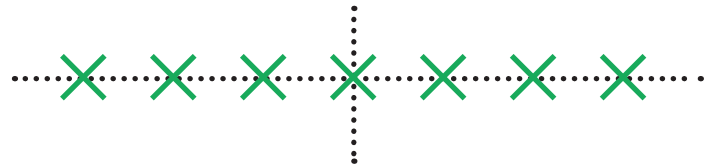
- Water **runs** down the drain.
- Rice **fills** the bowl.

# 1 Grammar Notes cont.

## B. Uses

### Repeated Actions

We use the simple present for actions that happen over and over. *Time markers* (words that indicate the tense of a verb) are common with repeated actions.



| Common Time Markers  | Examples   |
|--|--|
| <p>Every</p> <p>(every day, every week, every month, every year, etc.)</p>   | <ul style="list-style-type: none"> <li>I <b>wash</b> my face every day.</li> <li>She <b>brushes</b> her teeth every night.</li> </ul>                          |
| <p>Once, twice, three times, four times, etc.</p> <p>(once a week, twice a month, three times a year, four times a day, etc.)</p>                                      | <ul style="list-style-type: none"> <li>They <b>do</b> their homework three times a week.</li> <li>My sister <b>calls</b> her boyfriend twice a day.</li> </ul> |
| <p>Adverbs of frequency*</p> <p>(always, almost always, often, sometimes, almost never, never, etc.)</p> <p>You will study adverbs of frequency in another lesson.</p> | <ul style="list-style-type: none"> <li>My friends always <b>play</b> video games together.</li> <li>He never <b>eats</b> breakfast.</li> </ul>                 |

### True Facts

We use the simple present if the sentence is always true.

- Water **boils** at 212 degrees Fahrenheit.
- Leaves **fall** off the trees in autumn.

# 1 Grammar Notes cont.

## B. Uses cont.

### Non-Action Verbs

Verbs that don't contain an action or movement are called *non-action* verbs. These verbs are usually in the simple present.

| Non-Action Verbs  | Examples   |
|---|--|
| <b>Be</b><br>Note: You will study the <i>Be</i> verb in another lesson. | <ul style="list-style-type: none"> <li>• She <b>is</b> hungry.</li> <li>• My brothers <b>are</b> good at basketball.</li> </ul>  |
| <b>Have</b>   | <ul style="list-style-type: none"> <li>• He <b>has</b> a dog.</li> <li>• I <b>have</b> many books on my bookshelf.</li> </ul>  |
| <b>Feelings</b><br>( <i>love, like, hate, feel, etc.</i> )              | <ul style="list-style-type: none"> <li>• My mother <b>likes</b> pizza.</li> <li>• My friends <b>love</b> snowboarding. / My friends <b>love</b> to snowboard.</li> </ul> |
| <b>Thinking verbs</b><br>( <i>think, know, believe, etc.</i> )          | <ul style="list-style-type: none"> <li>• She <b>thinks</b> our new teacher is nice.</li> <li>• We <b>know</b> all the capital cities in Europe.</li> </ul>               |
| <b>The senses</b><br>( <i>see, hear, taste, smell, etc.</i> )           | <ul style="list-style-type: none"> <li>• Ice cream <b>tastes</b> delicious.</li> <li>• Those flowers <b>smell</b> nice.</li> </ul>                                       |

### Schedules

We often use the simple present for schedules in English. This includes TV schedules, transportation timetables, school schedules, personal schedules, etc.

- *SpongeBob Squarepants* **airs** on channel 22 at 4:00 pm tomorrow.
- Bus #451 **leaves** from the station at 9:00 pm tonight.
- The principal **addresses** our class tomorrow morning.
- I **go** to the doctor at 10:00 am next Friday.

## 2 Multiple-Choice

Choose the correct answer.

- Ex** My mother \_\_\_\_\_ for work at 6:00 am every morning.  
**a)** leaves  
**b)** leave
- 1** The show \_\_\_\_\_ at 7:00 pm.  
**a)** starts  
**b)** start
- 2** We \_\_\_\_\_ in the park in the evenings.  
**a)** jogs  
**b)** jog
- 3** Water \_\_\_\_\_ at 32°F.  
**a)** freezes  
**b)** freeze
- 4** My neighbor \_\_\_\_\_ his lawn three times a week.  
**a)** mows  
**b)** mow
- 5** Some people \_\_\_\_\_ to the movies on Friday nights.  
**a)** goes  
**b)** go
- 6** Your dog \_\_\_\_\_ holes in my yard at night.  
**a)** digs  
**b)** dig
- 7** Children \_\_\_\_\_ in the lake every summer.  
**a)** swims  
**b)** swim
- 8** Their house \_\_\_\_\_ beautiful.  
**a)** looks  
**b)** look
- 9** She \_\_\_\_\_ a lot of text messages every day.  
**a)** gets  
**b)** get



# 3 Fill in the Blanks

Choose a verb from the box, and write the correct simple present form in the sentences below.

Ex His sister sings karaoke on Tuesday evenings.

1 My dog \_\_\_\_\_ on me when I get home.

2 They \_\_\_\_\_ to school at 8:30 every morning.

3 My brother \_\_\_\_\_ the table every evening, and I do the dishes.

4 At the end of the year, we \_\_\_\_\_ for our exams.

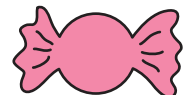
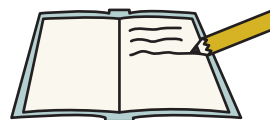
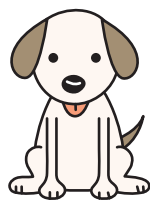
5 She \_\_\_\_\_ in her journal every day.

6 My father \_\_\_\_\_ in an office downtown.

7 I \_\_\_\_\_ sick when I eat junk food.

**Verbs:**

- go
- sing
- set
- jump
- study
- write
- feel
- work



# 4 Questions & Answers

## Examples

### Questions

- Do you like snowboarding?
- Does he eat dinner at 7:30 pm?
- Do they need to finish the report?
- Does she go to elementary school?
- Do we study English every day?

### Short Answers

- Yes, I do. / No, I don't.
- Yes, he does. / No, he doesn't.
- Yes, they do. / No, they don't.
- Yes, she does. / No, she doesn't.
- Yes, we do. / No, we don't.

## A. Short Answers



Write a short answer for each question using the word in parentheses.

**Ex** Does he play football after school? (**no**)

**No, he doesn't.**

**1** Do they go to church on Sundays? (**yes**)

**2** Does she take ballet lessons twice a week? (**yes**)

**3** Do they like broccoli? (**no**)

**4** Do you live in the city? (**yes**)

# 4 Questions & Answers cont.

## B. Questions

Write a question for each answer using the words in parentheses.

**Ex** Do they study every day?

Yes, they do. (study every day)

**1** \_\_\_\_\_

No, she doesn't. (go to school on weekends)

**2** \_\_\_\_\_

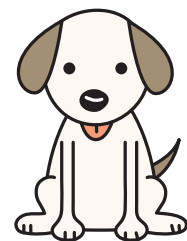
Yes, I do. (take piano lessons after school)

**3** \_\_\_\_\_

Yes, he does. (have a dog)

**4** \_\_\_\_\_

No, they don't. (own a motorhome)



# 5 Bingo!

Ask different classmates these questions. When someone answers “Yes, I do” draw an X through the square. If you get a complete horizontal (—), vertical (|), or diagonal (/ or \) line, yell “Bingo!”

|                                     |                                       |  |                                 |                                  |
|-------------------------------------|---------------------------------------|--|---------------------------------|----------------------------------|
| Do you like ice cream?              | Do you have a cat?                    | Do you wash your face every day?           | Do you wear jeans to school?    | Do you watch TV every night?     |
| Do you like playing games?          | Do you go to the beach in the summer? | Do you play an instrument?                 | Do you take the bus?            | Do you like animals?             |
| Do you clean your room on weekends? | Do you have a dog?                    | <b>FREE SPACE</b>                          | Do you like sushi?              | Do you have a brother or sister? |
| Do you play any sports?             | Do you like pizza?                    | Do you brush your hair every day?          | Do you wear sneakers to school? | Do you like to dance?            |
| Do you brush your teeth before bed? | Do you wear boots when it rains?      | Do you do your homework five times a week? | Do you like hamburgers?         | Do you drink water every day?    |

# 6 Pair Work (Student A)



## A. Speaking Practice

Ask your partner questions to fill in the missing information.

### Examples

**1** A: What time does Maria wake up?  
B: She wakes up at 6:30 am.

**2** B: What time does John wake up?  
A: He wakes up at 6:15 am.

|   | wakes up       | eats breakfast | goes to school | eats lunch      | eats dinner    | does homework  | goes to bed     |
|---|----------------|----------------|----------------|-----------------|----------------|----------------|-----------------|
| <br><b>John</b>   | <b>6:15 am</b> |                | <b>8:30 am</b> |                 | <b>7:00 pm</b> |                | <b>11:00 pm</b> |
| <br><b>Maria</b> |                | <b>7:45 am</b> |                | <b>12:00 pm</b> |                | <b>7:15 pm</b> |                 |

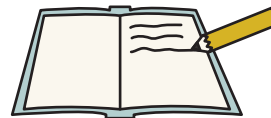
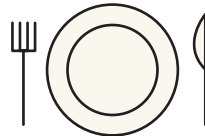
# 6 Pair Work (Student A) cont.

## B. Writing Practice



Now write 6 sentences about John's daily routine.

- Ex John wakes up at 6:15 am.
- 1 \_\_\_\_\_
- 2 \_\_\_\_\_
- 3 \_\_\_\_\_
- 4 \_\_\_\_\_
- 5 \_\_\_\_\_
- 6 \_\_\_\_\_



# 6 Pair Work (Student B)



## A. Speaking Practice

Ask your partner questions to fill in the missing information.

### Examples

**1** B: What time does John wake up?  
A: She wakes up at 6:15 am.

**2** A: What time does Maria wake up?  
B: He wakes up at 6:30 am.

|  | wakes up | eats breakfast | goes to school | eats lunch | eats dinner | does homework | goes to bed |
|--|----------|----------------|----------------|------------|-------------|---------------|-------------|
| <br>John   |          | 7:20 am        |                | 12:15 pm   |             | 8:15 pm       |             |
| <br>Maria | 6:30 am  |                | 8:40 am        |            | 6:00 pm     |               | 10:30 pm    |

# 6 Pair Work (Student B) cont.

## B. Writing Practice



Now write 6 sentences about Maria's daily routine.

- Ex **Maria wakes up at 6:30 am.**
- 1 \_\_\_\_\_
- 2 \_\_\_\_\_
- 3 \_\_\_\_\_
- 4 \_\_\_\_\_
- 5 \_\_\_\_\_
- 6 \_\_\_\_\_





# 8 Find Someone Who

Write the questions in the chart. Then interview your classmates. If your classmate answers "Yes, I do" write his or her name in the space on the right.

| #  | Find someone who...                             | Question                            | Name |
|----|---|-------------------------------------|------|
| 1  | eats breakfast every morning.                   | Do you eat breakfast every morning? |      |
| 2  | wears the same jacket every day.                |                                     |      |
| 3  | spends time with his or her family on weekends. |                                     |      |
| 4  | brushes his or her teeth twice a day.           |                                     |      |
| 5  | watches TV on school nights.                    |                                     |      |
| 6  | plays sports 10 or more times a month.          |                                     |      |
| 7  | has a cell phone.                               |                                     |      |
| 8  | likes eating junk food.                         |                                     |      |
| 9  | takes the bus to school 5 times a week.         |                                     |      |
| 10 | eats dinner around 6:00 pm every night.         |                                     |      |