



Asking for Directions

**DIALOGUE - Asking for Directions**

Ana: Excuse me, Officer. I'm visiting Boston and I'm lost.

Officer: Boston is a big city. What are you looking for?

Ana: I'm supposed to meet my friend at an art museum in Cambridge.

Officer: Do you know the address?

Ana: Yes. It's at the intersection of Manson and Womack.

Officer: North Womack or South Womack?

Ana: South.

Officer: First, catch the T at the station in the middle of the block.

Ana: On this street?

Officer: Yes, you can see it from here. Do you see the sign by the gate to the east?

Ana: Oh, yes, I see it. Do I go down?

Officer: Yes, take the steps down and take the train going west.

Ana: How many stops before I get off the subway?

Officer: Three stops.

Ana: Do you know the name of the stop?

Officer: Yes, you'll get off at the Harvard Station. When you go up the steps, you'll follow the first street to the right.

Ana: Is that Manson or South Womack?

Officer: No, that's Greenlee Street. Walk along Greenlee for two blocks and turn right at the stop sign.

Ana: What should I do after I turn right?

Officer: That street is South Womack. All you'll have to do is follow it until you get to the next corner where you'll see the street sign for Manson.

Ana: And the museum is right there?

Officer: Yes, it is. It's a big building. You can't miss it. It'll be on your left, just to the northeast.

Ana: Thank you so much.

Officer: No problem. I hope you enjoy your visit to the city.

**The T is the subway system in Boston.*



VOCABULARY CHECK - Matching

Match the words on the left with the definitions on the right.

- | | |
|-----------------------|--|
| 1. lost _____ | A. a place or building where modes of public transport stop |
| 2. address _____ | B. a location with a number, street, and city designation |
| 3. intersection _____ | C. a display showing the name of a street |
| 4. station _____ | D. location where cars drive; buildings are built along the side |
| 5. block _____ | E. an underground mode of public transportation |
| 6. street _____ | F. not able to find a location |
| 7. sign _____ | G. places where public transport halt to let people off and awaiting passengers on |
| 8. subway _____ | H. the meeting place at the end of two streets |
| 9. stops _____ | I. the space between one street and another |
| 10. corner _____ | J. the place where two streets cross one another |

CONVERSATION STARTER

Work with a partner. Look at the pictures and try to create a dialogue.

getting lost





CONVERSATION STARTER - Continued

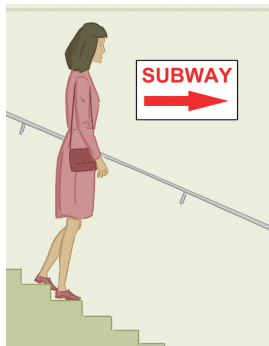
asking for directions





giving directions

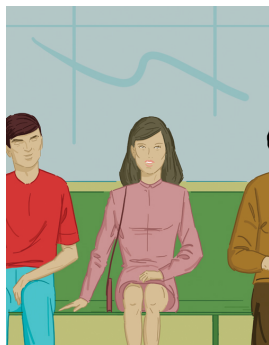
going to subway station





catching a subway train

riding a train





CONVERSATION STARTER - Continued

getting off a train



Four horizontal lines for writing.

Four horizontal lines for writing.



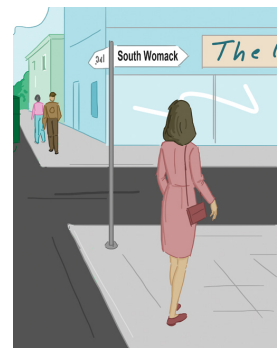
walking up to the street

walking down the street



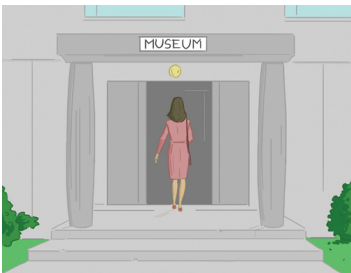
Four horizontal lines for writing.

Four horizontal lines for writing.



at the corner

at the museum



Four horizontal lines for writing.


DIALOGUE BUILDING
Fill in the missing words in the statements from the dialogue.

Ana	Officer
A. Excuse me, Officer. I'm visiting Boston and I'm _____.	1. North Womack or _____ Womack?
B. Oh, yes, I see it. Do I go _____?	2. First, catch the T at the _____ in the middle of the block.
C. Thank you so much.	3. Do you know the _____?
D. How many _____ before I get off the subway?	4. That street is South Womack. All you'll have to do is follow it until you get to the next _____ where you'll see the street sign for Manson.
E. Is that Manson or _____ Womack?	5. Yes, you'll get off at the Harvard Station. When you go _____ the steps, you'll follow the first street to the right.
F. Yes. It's at the _____ of Manson and Womack.	6. Yes, you can see it from here. Do you see the _____ by the gate to the east?
G. I'm supposed to _____ my friend at an art museum in Cambridge.	7. Yes, take the steps _____ and take the train going west.
H. What should I do after I turn _____?	8. Boston is a big city. What are you _____ for?
I. South.	9. Three _____.
J. On this _____?	10. Yes, it is. It's a big building. You can't miss it. It'll be on your _____, just to the northeast.
K. And the museum is right _____?	11. No problem. I hope you enjoy your visit to the city.
L. Do you know the _____ of the stop?	12. No, that's Greenlee Street. Walk along Greenlee for two _____ and turn right at the stop sign.

**DIALOGUE PRACTICE**

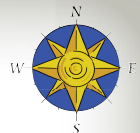
Cut up the pieces from the dialogue on the previous page. Take the list of Ana's statements and the Officer's statements and put them in order. Practice reading the dialogue with a partner. Practice for intonation, pronunciation, and elision.

DIALOGUE COMPREHENSION

1. Ana is visiting _____.
2. She asks an _____ for help because she gets _____.
3. She tells him that she is trying to find the _____.
4. He tells Ana she should take a _____.
5. Ana should get off at the _____ stop. The name of the station is _____.
6. After she goes up the steps, she should _____. The name of the street is _____.
7. He tells her that the museum is _____.

Can you draw a "map" detailing the directions that Ana is given to the museum?

MAP





DIALOGUE PRACTICE

Draw a map from the school to your house or your favorite hangout. Then find a partner. Exchange maps and ask each other directions to the location on the map.

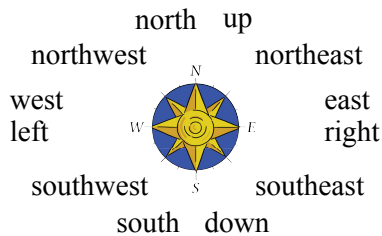
MY MAP





Answer Key

Vocabulary Check - Fill in the Blank (Page 2)



Vocabulary Check - Matching (Page 4)

1. F 2. B 3. J 4. A 5. I 6. D 7. C 8. E 9. G 10. H

Dialogue Building (Page 7)

A. lost B. down D. stops E. South F. intersection G. meet H. right J. street

K. there L. name

1. South 2. station 3. address 4. corner 5. up 6. sign 7. down 8. looking
9. stops 10. left 12. blocks

Dialogue Practice (Page 8)

The Order:

A	G	F	I	J	B	D	L	E	H	K	C
8	3	1	2	6	7	9	5	12	4	10	11

Dialogue Comprehension (Page 8)

1. Boston 2. officer, lost 3. museum 4. T 5. third, Harvard 6. follow the first street to the right, Greenlee
7. right there

Dialogue Practice (Page 9)

Individual Answers

Writing Task (Page 10)

Individual Answers