

Comparative Adjectives

| | | |
|----------|---------------------|----|
| 1 | Grammar Notes | 2 |
| 2 | Adjective Formation | 4 |
| 3 | Fill in the Blanks | 5 |
| 4 | Spot the Errors | 6 |
| 5 | Comparisons | 7 |
| 6 | Pair Work | 8 |
| A | Answer Key | 9 |
| B | Spelling Rules | 11 |

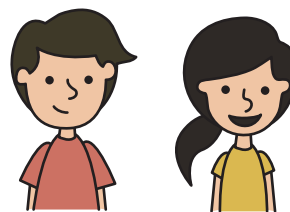
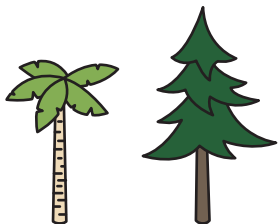
1 Grammar Notes

A. Introduction

Use comparative adjectives to **compare** two people, places, or things.

To make a comparison, add *-er* to the end of a short adjective or add *more* before a long adjective. Use *than* before the second noun.

| Comparative Adjectives | Form | Example |
|---|---|--|
| one syllable | Adj + <i>-er</i> | tall + <i>-er</i> = taller |
| two syllables ending in <i>-y</i> | <i>-y</i> changes to <i>-i</i> + <i>-er</i> | happy + <i>-er</i> = happier |
| two syllables (not ending in <i>-y</i>) | <i>more</i> + Adj | <i>more</i> + famous = more famous |
| three (or more) syllables | <i>more</i> + Adj | <i>more</i> + beautiful = more beautiful |



1 Grammar Notes cont.

B. Take Note!

Note #1

Some two-syllable adjectives don't follow the normal rules.

For example, we can say *friendlier* **or** *more friendly* and *simpler* **or** *more simple*.

Other such adjectives include *angry*, *cruel*, *handsome*, *gentle*, and *quiet*.

Note #2

Participial adjectives (-ed or -ing adjectives) are always formed with **more + adjective**. Do not use -er even if the adjective has only one syllable.

For example, we must say *more bored*, *more tired*, *more thrilling*, and *more exciting*.

Note #3

Irregular comparative adjectives include:

- good → better
- bad → worse
- far → farther/further

C. Examples

- Maria is **taller than** Jack.
- I feel **happier than** I did yesterday.
- The buildings are **more modern than** in my city.
- Sunsets at the beach are **more beautiful than** sunsets in the city.



Remember:

Use **than**, not **then**, before the second noun.

2 Adjective Formation

Write the comparative form beside each adjective.

| # | Adjective | Comparative Adjective | # | Adjective | Comparative Adjective |
|----|-------------|-----------------------|----|-------------|-----------------------|
| Ex | beautiful | more beautiful | 10 | calm | |
| 1 | scary | | 11 | tall | |
| 2 | adventurous | | 12 | angry | |
| 3 | exciting | | 13 | bored | |
| 4 | old | | 14 | smart | |
| 5 | lazy | | 15 | hungry | |
| 6 | tired | | 16 | modern | |
| 7 | intelligent | | 17 | delicious | |
| 8 | quiet | | 18 | short | |
| 9 | pretty | | 19 | troublesome | |

3 Fill in the Blanks

Write the comparative form of the adjective in the blanks.

Ex It is windier in Chicago than in Los Angeles.
(windy)



1 The class was _____ than he expected.
(short)

2 Your party will be _____ than my party.
(good)



3 Were you _____ than your sister after school today?
(sleepy)

4 She feels _____ today than yesterday.
(tired)

5 Mexico is _____ than Canada.
(warm)



6 He is a _____ soccer player than she is.
(bad)

7 Was today's quiz _____ than last week's quiz?
(simple)



8 I am _____ at home than at school.
(comfortable)

9 This test is going to be _____ than usual.
(difficult)



4 Spot the Errors

Find the error in each of the following sentences.
Rewrite the correct sentences.

Ex The movie theater is loud than the library.

The movie theater is louder than the library.

1 Science is interestinger than math.

2 Antarctica is colder then Africa.

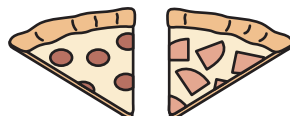
3 Who is famouser, Brad Pitt or Johnny Depp?

4 Do you think his paintings are more pretty than my paintings?

5 My friend is more adventurous my brother.

6 The second *Pirates of the Caribbean* was badder than the first one.

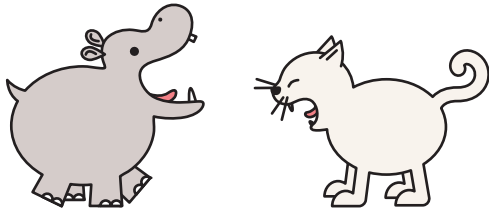
7 What pizza topping do you like more good, pepperoni or ham?



5 Comparisons

Discuss the images with a partner, and then write a sentence using a comparative adjective.

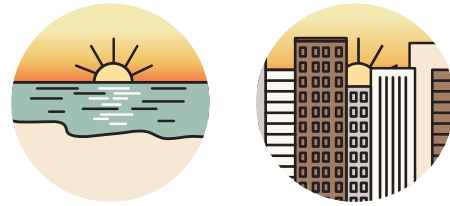
Ex



hippo's mouth / cat's mouth

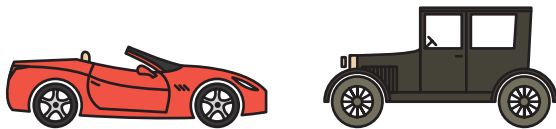
The hippo's mouth is wider than the cat's mouth.

3



sunsets at the beach / sunsets in the city

1



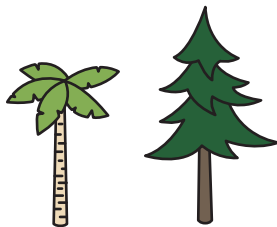
new car / old car

4



ancient architecture / modern architecture

2



palm tree / pine tree

5



sushi / pasta

6 Pair Work

Ask your partner the following questions.

Write the question, and then write your name or your partner's name (depending on the answer).

| # | Adjective | Question | Name |
|---|-------------|----------------|------|
| 1 | tall | Who is taller? | |
| 2 | short | | |
| 3 | old | | |
| 4 | young | | |
| 5 | outgoing | | |
| 6 | athletic | | |
| 7 | silly | | |
| 8 | adventurous | | |

A Answer Key

Lesson Description:

In this lesson, students study the form and use of comparative adjectives. They practice making comparisons through speaking, writing, and pair work exercises, and they also review common spelling rules.

Level: Int

Time: 2–3 hours

Tags: adjectives, comparative adjectives, comparing, more than, -er, grammar, grammar practice, fun grammar lessons

2 Adjective Formation

- | | |
|-------------------------|--------------------------|
| 1. scarier | 11. taller |
| 2. more adventurous | 12. angrier / more angry |
| 3. more exciting | 13. more bored |
| 4. older | 14. smarter |
| 5. lazier | 15. hungrier |
| 6. more tired | 16. more modern |
| 7. more intelligent | 17. more delicious |
| 8. more quiet / quieter | 18. shorter |
| 9. prettier | 19. more troublesome |
| 10. calmer | |

3 Fill in the Blanks

- | | |
|---------------|--------------------------|
| 1. shorter | 6. worse |
| 2. better | 7. more simple / simpler |
| 3. sleepier | |
| 4. more tired | 8. more comfortable |
| 5. warmer | 9. more difficult |

4 Spot the Errors

- Science is **more interesting** than math.
- Antarctica is colder **than** Africa.
- Who is **more famous**, Brad Pitt or Johnny Depp?
- Do you think his paintings are **prettier** than my paintings?
- My friend is more adventurous **than** my brother.
- The second *Pirates of the Caribbean* was **worse** than the first one.
- What pizza topping do you like **better**, pepperoni or ham?

(continued on the next page...)

A Answer Key cont.

5 Comparisons

Answers will vary. Example answers:

1. The new car is faster than the old car.
2. Pine trees are taller than palm trees.
3. Sunsets at the beach are more beautiful than sunsets in the city.
4. Ancient architecture is more detailed than modern architecture.
5. Sushi is healthier than pasta.

6 Pair Work

Do this exercise in pairs or small groups.

1. Who is taller?
2. Who is shorter?
3. Who is older?
4. Who is younger?
5. Who is more outgoing?
6. Who is more athletic?
7. Who is sillier?
8. Who is more adventurous?

Spelling Note:

This lesson shows the American spelling of the word *Theater*. Most other English-speaking countries spell it this way: *Theatre*. Make it a challenge for your students to find this word in the lesson and see if they know the alternate spelling.

Editor's Note:

If your students aren't familiar with the spelling rules associated with comparative adjective formation, please go over the printable handout with them on page 11.

B Spelling Rules

When we add *-er* to the end of an adjective, we must follow certain spelling rules.

| Syllables | Rule | Examples |
|-----------|--|--|
| 1 | If the adjective ends in <i>-e</i> , add <i>-r</i> . | <ul style="list-style-type: none"> • close → closer • late → later • strange → stranger |
| 1 | If the adjective ends in a consonant-vowel-consonant (CVC) pattern, double the final consonant. | <ul style="list-style-type: none"> • big → bigger • hot → hotter • thin → thinner |
| 2 | If the adjective ends in <i>-y</i> , change <i>-y</i> to <i>-i</i> and add <i>-er</i> . | <ul style="list-style-type: none"> • happy → happier • silly → sillier • busy → busier |