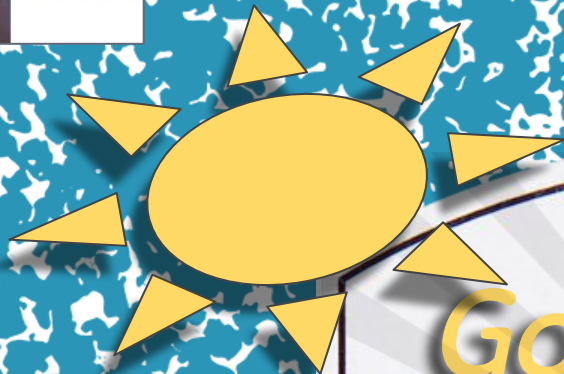




Read



Good Morning!

English for Speakers
of Other Languages

ESOL Online AM

Week 31 - Day 91 - WEDNESDAY- 5-01-24 SP
Today is Wednesday, May 1, 2024.

Spring



Worcester
Adult Learning Center



Read

THINGS YOU WILL DO IN CLASS

Write





Read

Speak



Listen

CLASS VALUES

- Be respectful 
- Be kind 
- Be on time 
- Be helpful 

SCHOOL RULES

Attendance

- Please do your best to make personal appointments outside of our class time.
- Do not miss more than 2 classes a month without an excuse (sick child, etc.)
- Send a message to the teacher if you can not come to class.

Participation

- Please keep your video on during class.
- Cameras must be on for Conversation Practice.

WHEN DO WE MEET AS A CLASS?

Tuesday, Wednesday, Thursday

Fall Semester: September 5 - December 21

Spring Semester: January 2 - June 6 (last class)

Graduation & End of Year Celebration: June 12
6:00 PM

- Class start time: 9:00 AM
 - BREAK: 10:00 - 10:20 AM
- Class end time: 11:30 AM

Homework: 11:30 - 12:00 NOON

We do have class
on snow days,
because we are
online!



Worcester Public Schools calendar
(Holidays and Vacation weeks are the same)

Get the calendar in your language!



- PDF [English \(PDF\)](#)
- PDF [Shqipe \(PDF\)](#)
- PDF [العربية \(PDF\)](#)
- PDF [नेपाली \(PDF\)](#)
- PDF [Português \(PDF\)](#)
- PDF [Español \(PDF\)](#)
- PDF [Twi \(PDF\)](#)
- PDF [Tiếng Việt \(PDF\)](#)

AGENDA (WHAT WE WILL DO THIS WEEK)

Unit: Careers

- News & Housekeeping
- Journal Writing - Prepositions of Place
- Dream Jobs - reading - continued
- Occupations - continued
- Mini Lessons
 - Prepositions of Place with Household Appliances
 - Reading and writing numbers
 - Make a sandwich*
 - Washer / Dryer dimensions - continued*
- *Helping Verbs - be, do, have - review as needed*

*time permitting

OBJECTIVES – AT THE COMPLETION OF THIS WEEK'S UNIT LESSONS STUDENTS WILL BE ABLE TO:

Unit: Careers

- Write complete sentences with correct grammar sequence
 - Answer comprehension questions about a reading
 - Identify and pronounce names of common job occupations
-

- Identify washing machine dimensions and capacity
- Use the correct prepositions for the location of things
- Identify common household appliances
- Read and write numbers in words
- Identify the sequence of steps in a recipe

*Time permitting

STANDARDS – AT THE COMPLETION OF THIS UNIT'S LESSONS STUDENTS WILL BE ABLE TO:

Writing

- W3C.3a. Show knowledge of basic grammar to construct simple sentences (including negative sentences and questions), such as: verbs to convey a sense of past, present, and future
- W4A.2b. Respond to simple prompts (e.g., the five W questions, quotes) to formulate ideas.
- W4A.3a. Discuss information and ideas gleaned from reading, listening, or experience.

Reading

- R1A.4a. Read and comprehend a range of authentic or level-adapted multi-paragraph informational texts, such as: ATM receipts.
- R1B.3a. Identify the main purpose of a text, including what the author wants to answer, explain, or describe.
- R1B.3b. Ask and answer five W questions about the topic, stated main idea, and key details in a text.
- R1B.3c. Distinguish what a text says explicitly from inferences.
- R1B.3f. Read aloud simple paragraphs with, on successive readings, sufficient accuracy and appropriate intonation.
- R1B.4f. Read aloud connected text composed primarily of simple and compound sentences with sufficient accuracy, and appropriate intonation and phrasing.
- R4A.1b Make predictions about the content of text based on pictures or prior knowledge of the context
- R4B.3d. Use a placeholder word (e.g., “something”) for an unknown word and continue reading.
- R5.2a Use information gained from visuals (e.g. pictures, illustrated maps) to support comprehension.

Listening & Speaking

- L/S1A.3a. Carry out listening tasks that require the listener to comprehend short connected statements and questions on familiar topics when spoken slowly and clearly, such as: • short descriptive updates (e.g., update from co-worker at shift change)• digital messages (e.g., TV news and weather, phone messages)• short sequence of events or simple two- or three-step instructions.
- L/S1A.3b. Carry out speaking tasks that require a short, simple explanation related to expressing needs, feelings, or information in familiar contexts, such as: • explaining basic needs, experiences, or preferences • leaving phone messages with appropriate level of detail (e.g., for school or work)• describing a problem clearly
- L/S3B.1c. Distinguish between yes/no and information questions.
- L/S3B.3b. Use word order that consistently approximates standard English.
- L/S5.1b. With support, use provided media to extend practice of oral English

Unit: Careers

- Dream Jobs (ellii)
 - Occupations (ellii, opdome, [Games to Learn English](#))
-

- Washer / Dryer dimensions (HomeDepot.com)
- Prepositions of Place with Household Appliances*
- Read an Appointment Card*
- Making a Sandwich*
- Helping Verbs - Lessons (Be, Do, Have, video, mmmEnglish)
- Images*

*See Resources slide for additional links

RESOURCES

Unit: Careers

Lessons:

Dream Job (ellii)

Occupations (ellii, opdome, Games to Learn English)

Mini Lessons

Washing Machine Dimensions (video, HomeDepot.com and slides)

Prepositions of Place (elli, Fun Grammar Lessons and Grammar Worksheets)

Prepositions of Place with Household Appliances (slides)

Writing numbers (slides)

Read an Appointment Card (slides)

Making a Sandwich (slides)

Images

Washer and Dryer Dimensions (video, and Home Depot.com) / Household Appliances (iStock, 7esl.com, see slides)

Making a Sandwich (google search images)/ Occupations (opdome, Games to Learn English, ellii) / [Kitchen](#) - journal writing prepositions

The school tests each your progress in English each semester.

Pre-Test (after 60 hours of classes)

Post-Test (end of semester)



Worcester Adult Learning Center
24 Chatham Street, Worcester, MA

Teacher Alys will call you AND text you to schedule your test.

Please check your voicemail and text her back. Include what day you would like to take your test.

Testing times:

- Monday, Tuesday, Wednesday, Thursday or Friday mornings: 9:00 AM – 12:00 NOON
- Tuesday and Thursday nights: 5:00 – 6:00 PM



Worcester
Adult Learning Center

NEWS





MAY 2024

SUNDAY	MONDAY	TUESDAY	WEDNESDAY	THURSDAY	FRIDAY	SATURDAY
28	29	30	1	2	3	4
5	6	7	8	9	10	11
12	13	14	15	16	17	18
19	20	21	22	23	24	25
26	27	28	29	30	31	1

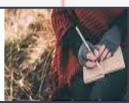
Holidays and Observances: 5: Cinco de Mayo, 12: Mother's Day, 27: Memorial Day

Homemade
with love

♥ Mother's Day
April 12

Memorial Day
Weekend
May 24 - 27
School is closed

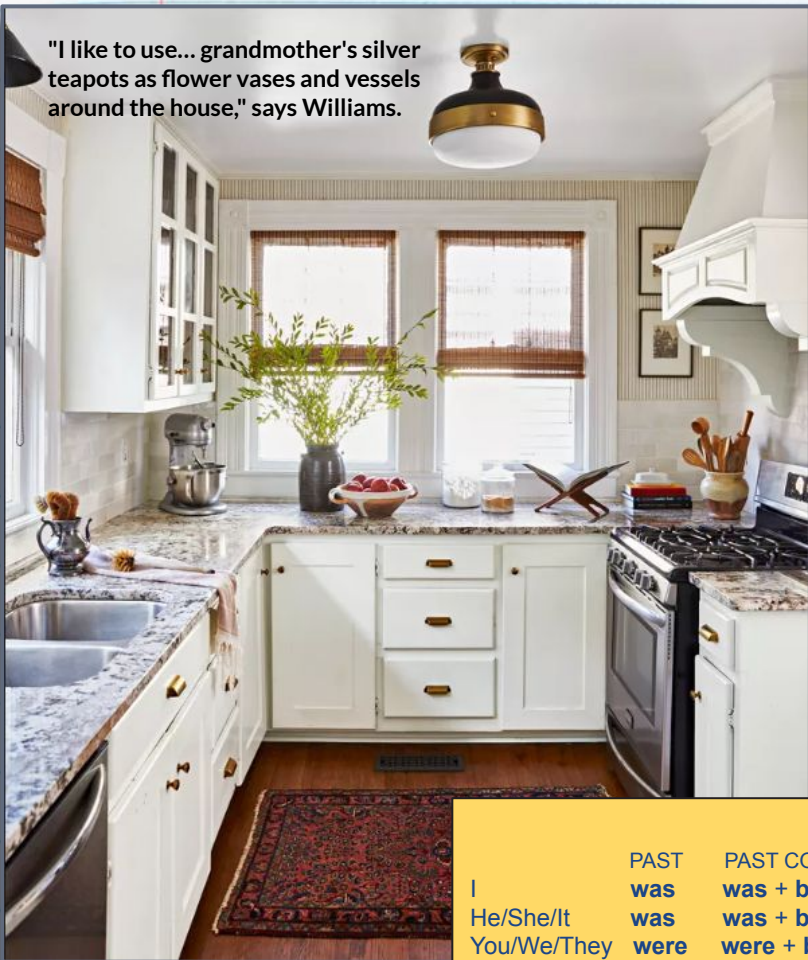
Write



JOURNAL WRITING

Write complete sentences. Try to include: prepositions & be' verbs.

"I like to use... grandmother's silver teapots as flower vases and vessels around the house," says Williams.



Vocabulary

- silver (adj / noun)
- teapot /s (noun)
- vase /s (noun)
- vessel /s (noun)
- mix /es /-ing mixer (noun)
- jar /s /-ed /-ing jar (noun)
- shade /s (noun)
- blind / s (noun)
- hood (noun)
- vent /s /-ed /-ing vent (noun)
- kitchen or cooking utensil /s (noun)
- silverware (noun)

Write about this picture.

What do you see?

Tell me more...

Be Verb - Examples

	PAST	PAST CONTINUOUS	PRESENT	PRESENT CONTINUOUS	FUTURE
I	was	was + being OR + ___ing	am	am + being OR + ___ing	(will) / will be /(going to)
He/She/It	was	was + being OR + ___ing	is	is + being OR + ___ing	(will) / will be /(going to)
You/We/They	were	were + being OR + ___ing	are	are + being OR + ___ing	(will) / will be /(going to)

Before Reading

Text features

What text features do you see?

- Title
- Headings
- Image
- Caption
- Bold words

Purpose

What is the purpose of this text?

- Entertain Inform Persuade (opinion)

Prediction

What is your prediction? What is the text about?

Dream Jobs

Discussion Starters

💡 Int 🎓 Teens & Adults



Students read about and discuss the importance of being passionate about one's work. They practice using alternative words for "like" and "dislike."

Dream Jobs – Discussion

1. Who has the best job in the world?
2. Who has the worst job in the world?
3. What is more important in a job, money or happiness?
4. Do you *work to live* or do you *live to work*?
5. What is your dream job?

Dream Jobs – Vocabulary

passionate

valued

attitude

pest control

plumber

challenged

high turnover

stepping stone

colleague

rut

[Dream Jobs \(ellii, video\)](#)

Reading 1

DREAM JOBS

Are you passionate about your work?



How important is it to love your work? Some people say it's the key to happiness. You spend so much time at your job that it has to be something you're **passionate** about. Other people say you have to at least feel **valued** in your workplace. Your dream job may still be a hobby, but the work you do must make a difference in people's lives.

Reading 2

DREAM JOBS

Are you passionate about your work?



Is it possible to adore your job no matter what you do? Your **attitude** toward your job can go a long way. A supportive **pest control** worker or **plumber** improves the quality of life of his customers. Feeling **challenged** on the job is important. A job that requires very little effort is hard to do for a long time. This is why some positions have a **high turnover**. Your night job may be a **stepping stone** to your future career.

Reading 3

DREAM JOBS

Are you passionate about your work?



The people we work with have a lot to do with job satisfaction, too.

You may be passionate about the work but hate your boss or coworkers.

On the other hand, you may work from home but miss interaction with **colleagues.**

Reading 4

DREAM JOBS

Are you passionate about your work?

The money you earn on the job is also important.

Do you earn enough money to meet your basic needs? Is there a little left over for your savings and recreation account? If you think you deserve more than you earn, you may be miserable at work. Asking for a raise may be your solution. Some people get **stuck in a rut** at work. They don't leave a **dead-end job** because they get too comfortable.



Reading 5

DREAM JOBS

Are you passionate about your work?

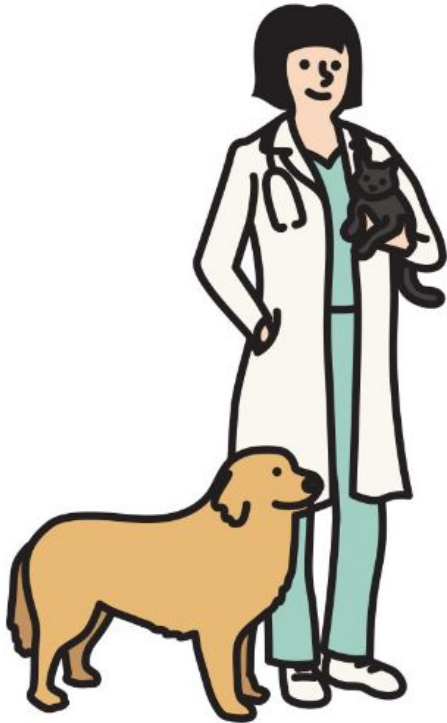
Think back to when you were a small child. What was your answer when people asked what you wanted to be when you grew up? Some experts say that our childhood dreams are the jobs we are meant to do.

Reading Comprehension – Questions

DREAM JOBS

1. What does a person need to have in order to enjoy his or her job?
2. Why does the reading mention a plumber?
3. According to the reading, what may be a stepping stone to a future career?
4. What do some self-employed workers miss?
5. What advice is offered at the end of the reading?

Careers - Occupations



[Occupation - Flashcards \(ellii\)](#)

[Occupations \(opdome, Jobs 1 & 2\)](#)

[Jobs \(GamestoLearningEnglish\)](#)



mini
lessons

Reading

Jazz Music

Have you ever heard jazz music before? Jazz music can be made with **instruments**. It can have fast or slow **beats**. Sometimes there is singing in jazz.

Which of these is an example of an instrument?

- A. Car
- B. Flute
- C. Cell phone

Writing numbers

\$2,600

- A. Twenty-six dollars
- B. Two thousand six hundred dollars
- C. Two hundred six dollars

4,002

- D. Four thousand two
- E. Four hundred two
- F. Four hundred twenty

Advanced

Write the following numbers in words.

\$ 42.00

\$ 1, 444.00

\$ 333.00

\$ 55.05

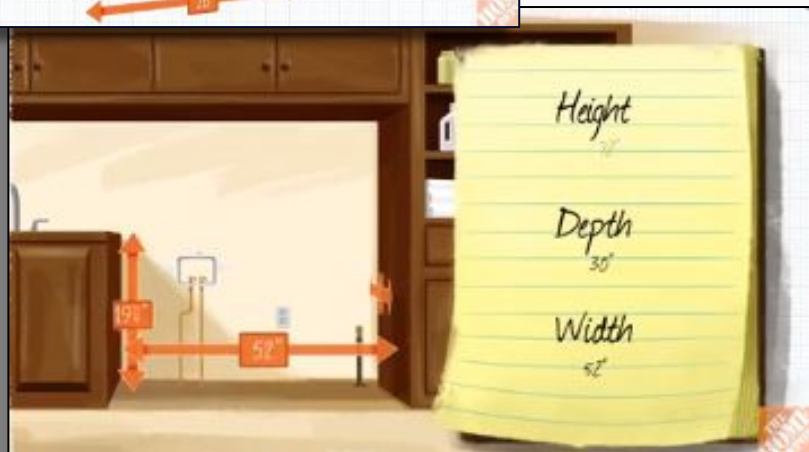
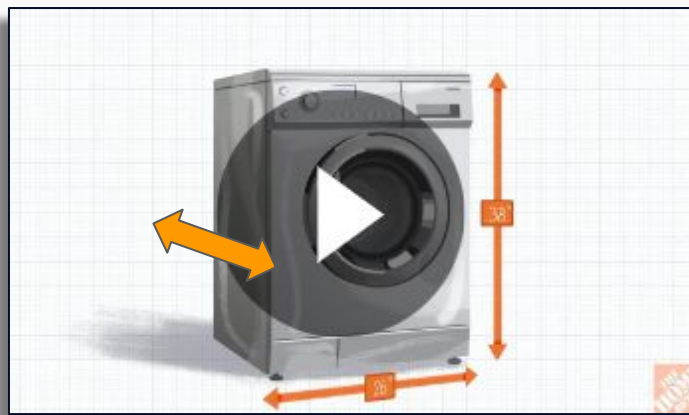
\$ 111.01

Send your answers to the teacher: Remind, text, or email.

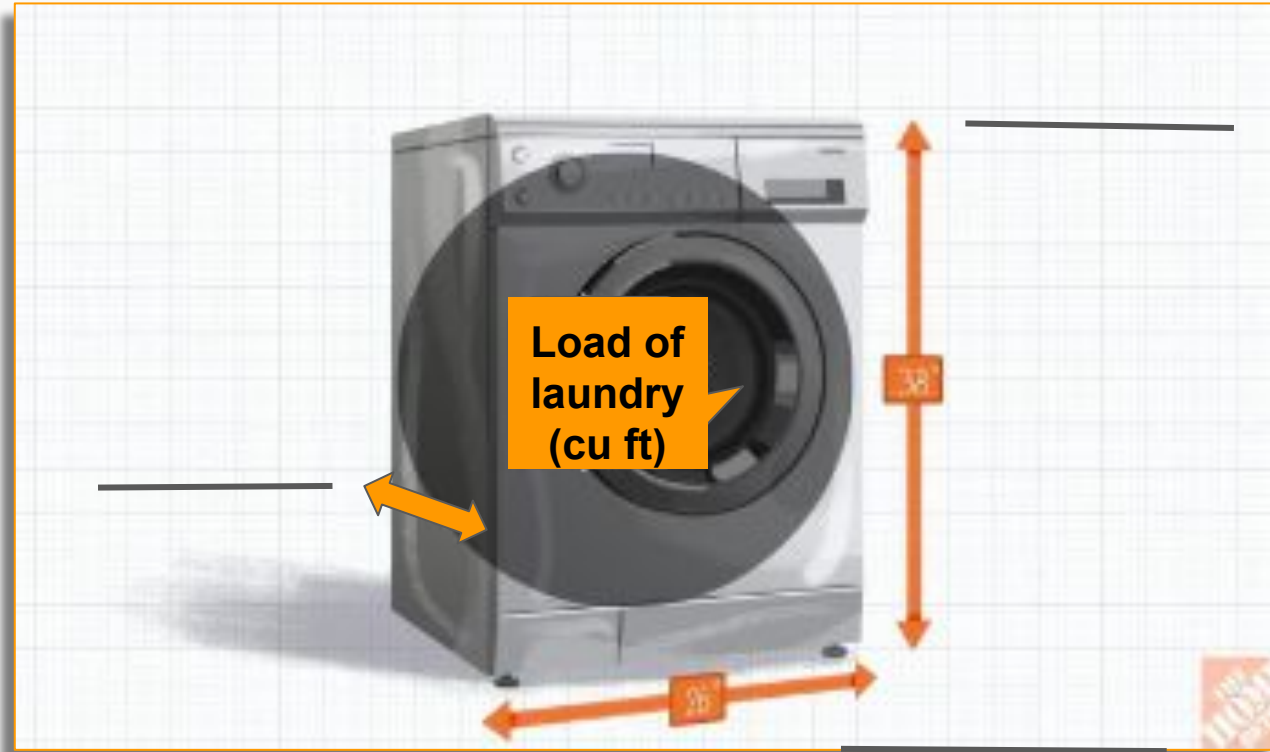
Washer and Dryer Dimensions

Taking accurate measurements in your home is critical when purchasing a new washer and dryer.

In this video, you will see the step by step instructions on how to do it correctly.



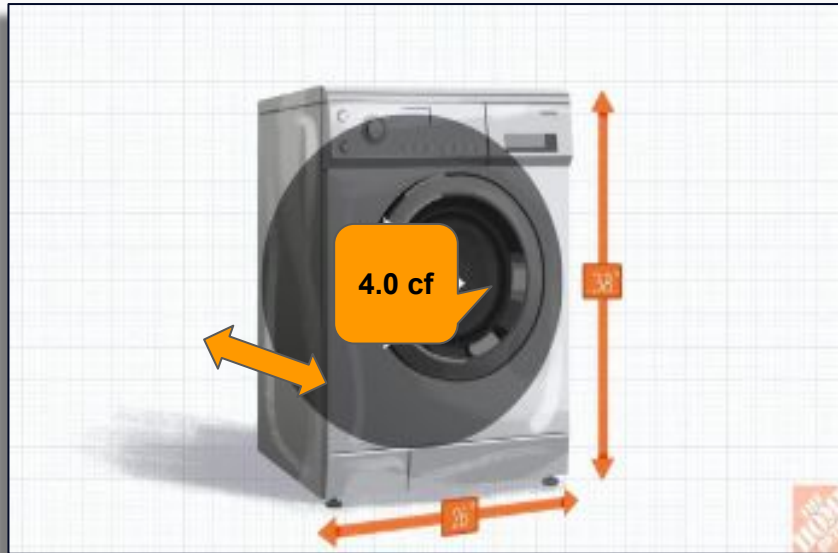
Washer and Dryer Dimensions



- a. Height
- b. Depth
- c. Width
- d. Capacity

Washer and Dryer Dimensions – Quiz

What belongs on line 1?

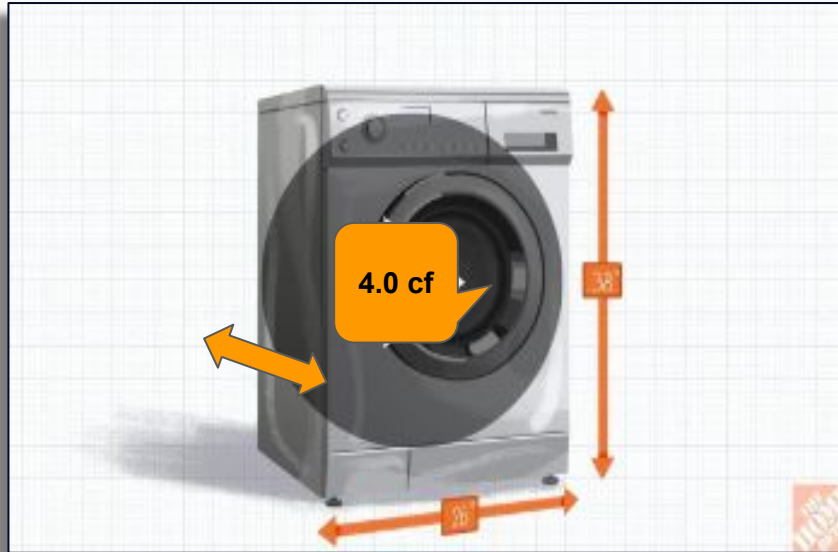


1 You need to fit the washing machine **between** the dryer and a wall.

- a. Height
- b. Depth
- c. Width
- d. Capacity

Washer and Dryer Dimensions – Quiz

What belongs on line 2?



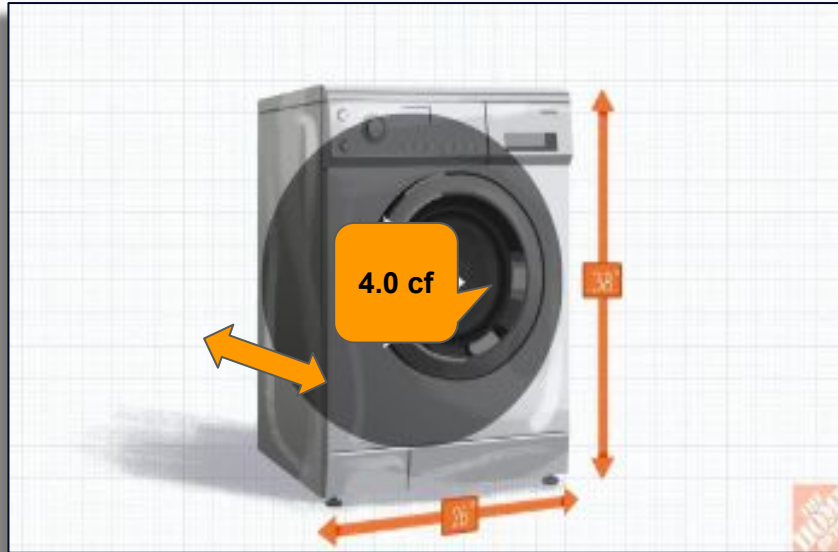
1 You need to fit the washing machine **between** the dryer and a wall.

2 You want to make sure there is room **behind** the washer (for the drain hose and drain pipe, and electric plug or gas pipe).

- a. Height
- b. Depth
- c. Width
- d. Capacity

Washer and Dryer Dimensions – Quiz

What belongs on line 3?

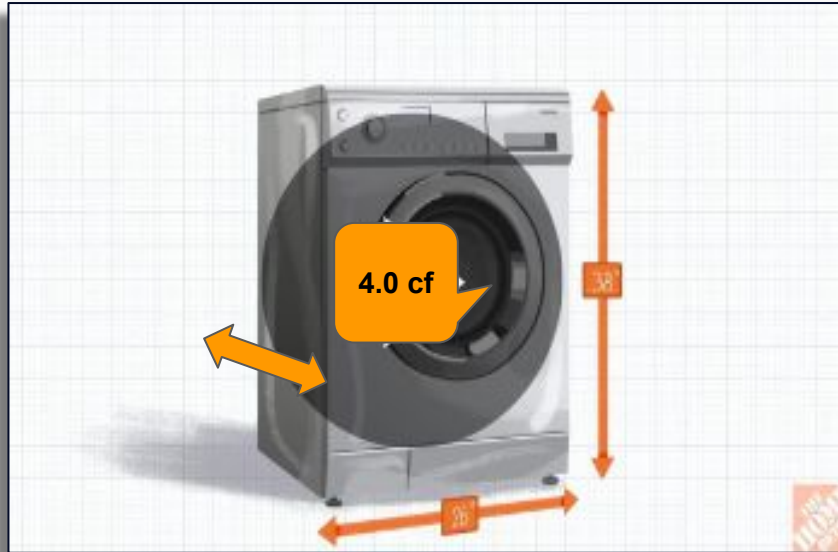


- _1_ You need to fit the washing machine **between** the dryer and a wall.
- _2_ You want to make sure there is room **behind** the washer (for the drain hose and drain pipe, and electric plug or gas pipe).
- _3_ You want the **top of** the machine to align with your sink or countertop.

- a. Height
- b. Depth
- c. Width
- d. Capacity

Washer and Dryer Dimensions – Quiz

What belongs on line 4?



- a. Height
- b. Depth
- c. Width
- d. Capacity

1 You need to fit the washing machine **between** the dryer and a wall.

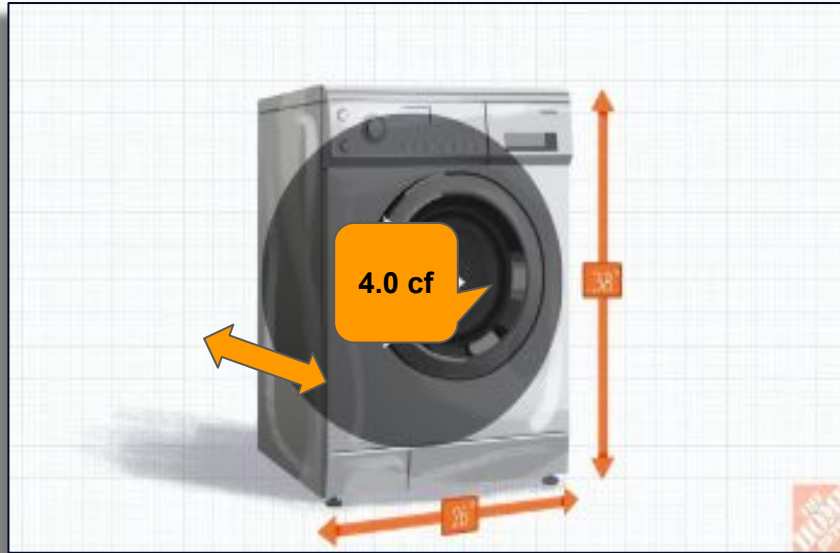
2 You want to make sure there is room **behind** the washer (for the drain hose and drain pipe, and electric plug or gas pipe).

3 You want the **top of** the machine to align with your sink or countertop.

4 You want enough room **in front of** the washing machine door for the door to **fully open**.

Washer and Dryer Dimensions – Quiz

What belongs on line 5?



- a. Height
- b. Depth
- c. Width
- d. Capacity

Washer and Dryer Dimensions (HomeDepot.com)

1 You need to fit the washing machine **between** the dryer and a wall.

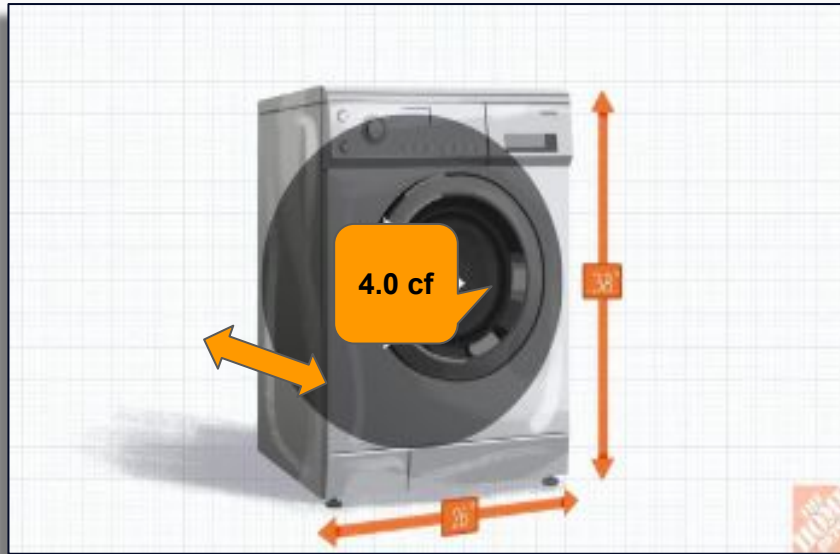
2 You want to make sure there is room **behind** the washer (for the drain hose and drain pipe, and electric plug or gas pipe).

3 You want the **top of** the machine to align with your sink or countertop.

4 You want enough room **in front of** the washing machine door for the door to fully open.

5 You want to know how much laundry the machine can hold.

Washer and Dryer Dimensions – Review



- Height
- Depth
- Width
- Capacity

Washer and Dryer Dimensions (HomeDepot.com)

- ___ You need to fit the washing machine **between** the dryer and a wall.
- ___ You want to make sure there is room **behind** the washer (for the drain hose and drain pipe, and electric plug or gas pipe).
- ___ You want the **top of** the machine to align with your sink or countertop.
- ___ You want enough room **in front of** the washing machine door for the door to fully open.
- ___ You want to know how much laundry the machine can hold.

Annual Wellness Exam - Appointment Reminder

It's time for your yearly checkup with Doctor Smith. 9:30 AM on Friday, May 3.

Please arrive 30 minutes __1__ your appointment so you can fill out paperwork.

If you are unable to make the appointment, please call our office immediately to reschedule your appointment. Ask for the receptionist at 508-843-5555 ext. 33.

Vocabulary

annual / ly

year / ly

month / ly

week / ly

daily

before

during

immediately

after

fill out

to make

make it to

reschedule

ask for

receptionist

ext. = extension



Annual Wellness Exam - Appointment Reminder

It's time for your yearly checkup with Doctor Smith. 9:30 AM on Friday, May 3.

Please arrive 30 minutes 1 your appointment so you can fill out paperwork.

If you are unable to make the appointment, please call our office immediately to reschedule your appointment. Ask for the receptionist at 508-843-5555 ext. 33.

What word belongs on line 1?

- A. After
- B. Before
- C. During
- D. Over

What does the word immediately mean?

- A. Later
- B. Right away
- C. Soon
- D. Never

What does annual mean?

- A. Every 2 years
- B. Twice a year
- C. One
- D. Yearly

Which clock shows the time of the appointment?



A



B



C



D

Vocabulary

annual / ly
year / ly
month / ly
week / ly
daily

before
during
immediately
after

fill out
to make
make it to
reschedule
ask for
receptionist
ext. = extension



How to make a peanut butter and jelly sandwich



1. *Put two pieces of bread on a plate.*
2. *Use a knife to put a tablespoon of peanut butter on one piece of bread.*
3. *Use another knife to put a tablespoon or so of jelly or jam on the other piece of bread.*
4. *Put the two pieces of bread together.*
5. *Slice the sandwich in half.*
6. *Enjoy!*

How to make a peanut butter and jelly sandwich



1. *Put two pieces of bread on a plate.*
2. *Use a knife to put a tablespoon of peanut butter on one piece of bread.*
3. *Use another knife to put a tablespoon or so of jelly or jam on the other piece of bread.*
4. *Put the two pieces of bread together.*
5. *Slice the sandwich in half.*
6. *Enjoy!*

What is the third step in making the peanut butter and jelly sandwich?

- A. Put the bread together
- B. Put jelly on the other piece of bread
- C. Slice the sandwich
- D. Put peanut butter on the bread

What do you do right after you put the jelly on the bread?

- A. Cut it in half
- B. Put the 2 pieces of bread together
- C. Eat it
- D. Put peanut butter on the bread

How to make a peanut butter and jelly sandwich



mini
lesson

**Prepositions
of Place**

What are Prepositions?

Prepositions are words that show things like:

time = at 2:00

place = on the table

direction = around the corner

Prepositions of Place

Sentence Patterns

pattern 1

The + noun + verb +
preposition + the + noun



The flowers are **on** the table.

pattern 2

There + verb + a + noun +
preposition + the + noun



There is a cat **under** the bed.

mini
lesson

Prepositions Practice

IN ACROSS INTO ABOUT AROUND BY
BEFORE BELOW
AGAINST FROM OUT BETWEEN OFF
WITH beneath at
DOWN FOR OVER THROUGH AFTER
NEAR along TO AT UP BEYOND in ON BEHIND
UNDER onto
ABOVE ON AMONG
BESIDE DURING INSIDE as TOWARD

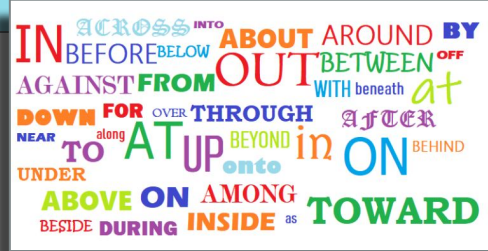
Prepositions Practice



1. What words do you remember?
2. How many of them are red?
3. How many of them are dark blue?
4. How many of them are light blue?
5. How many of them are dark green?
6. How many of them are lime green?
7. How many of them are orange?
8. How many of them are purple?
9. Which three words do you see twice?
10. Can you use the preposition ____ in a sentence?

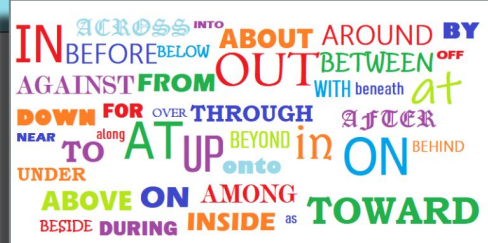
(YOU CAN REPEAT THIS QUESTION.)

Prepositions of Place



1. Where is the clothes dryer located?
2. Where is the washing machine?
3. Where is the refrigerator?

Prepositions of Place



1. What item is **farthest away** from the kettle?
2. What item is **nearest** the water purifier?
3. Where is the electric kettle located?



Kettle

Water cooker (UK)
/Electric kettle
/Hot pot (US)

Water purifier

Water filter

Prepositions of Place



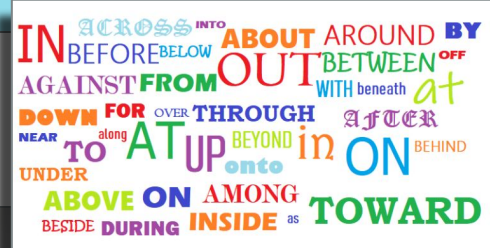
electric kettle
microwave
space heater
or radiator



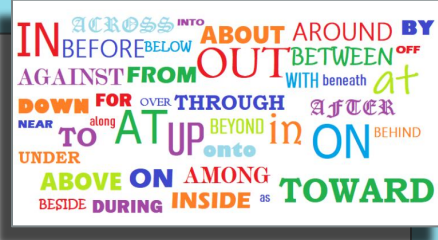
1. Where is the meat grinder located?
2. What is **on top of** the shelf?
3. What is below the meat grinder?
4. What is **next to** radiator?
5. What **goes into** the washing machine?
6. What **goes into** an electric kettle / hot pot?

Prepositions of Place

1. Where is the vacuum cleaner?
2. Where is the vent hood for the stove?
3. Where is the refrigerator?
4. What household appliance is **in front of** the fridge?



Prepositions of Place



Garbage Disposal

1. What is the person doing?
2. Where is the food going?
3. Where is the bottom of the garbage disposal located?



Quiz
Time



auxiliary verbs

'helping' verbs

So why are they so important?

Practice speaking English every day!

See you NEXT CLASS!

Click on

Leave Meeting

EXTRA SLIDES

DOWNLOAD A LANGUAGE APP

<u>Awabe</u>	<u>Hello Talk</u>	<u>Memrise</u>
<u>Busuu</u>	<u>Lingbe</u>	YouTube
<u>Duolingo</u>	<u>Learn English Daily</u>	<ul style="list-style-type: none">• <u>English with Anna</u>• <u>Teacher Alisha</u>• <u>Teacher Keith</u>• <u>Teacher Rebecca</u>• <u>Teacher Tiffany</u>• <u>Films in English</u>
<u>FluentU</u> (online/\$)	<u>Lyrics Training</u> (songs)	
<u>Hello English</u>	<u>Mango</u>	

What app are you using?

Practice speaking English 20 minutes every day.

IMPORTANT INFORMATION



**Worcester
Adult Learning Center**

Phone: 508-799-3090

24 Chatham Street,
Worcester, MA 01609

Teacher Marianne

Phone & Text: 774-551-6381

Kristin: Career Navigator

Text: 508-556-0713

Email: careers.walc@gmail.com

Zoom

Meeting ID: 496 900 0061

Password: 4sU7GC

Crystal: Student Advisor

Respond to REMIND.

Office hours: Tues, Wed, Thurs - 11:30am - 12:30pm

Leslie: Student Advising (Online Students)

Wed and Thurs - 12:00pm - 1:00pm

By appointment

Email: lfbowden08@gmail.com

- School
- Phone
- Zoom