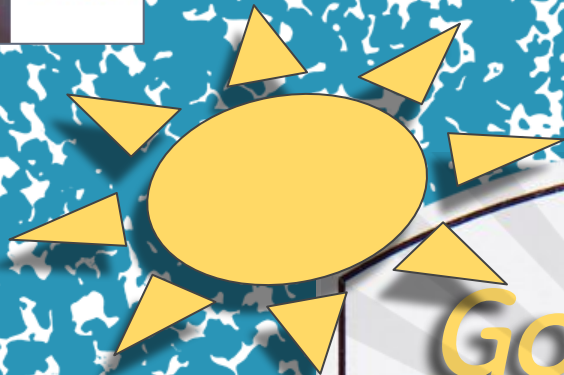




Read



*Good Morning!*

English for Speakers  
of Other Languages

*ESOL Online AM*

Week 32 \* Day 94 \* WEDNESDAY \* 5/08/24 SP  
Today is Wednesday, May 8, 2024.

Spring



Worcester  
Adult Learning Center



Read

## THINGS YOU WILL DO IN CLASS

Write







Read

Speak



Listen

## CLASS VALUES

- Be respectful 
- Be kind 
- Be on time 
- Be helpful 

## SCHOOL RULES

### Attendance

- Please do your best to make personal appointments outside of our class time.
- Do not miss more than 2 classes a month without an excuse (sick child, etc.)
- Send a message to the teacher if you can not come to class.

### Participation

- Please keep your video on during class.
- Cameras must be on for Conversation Practice.

## WHEN DO WE MEET AS A CLASS?

Tuesday, Wednesday, Thursday

Fall Semester: September 5 - December 21

Spring Semester: January 2 - June 6 (last class)

Graduation & End of Year Celebration: June 12  
6:00 PM

- Class start time: 9:00 AM
  - BREAK: 10:00 - 10:20 AM
- Class end time: 11:30 AM

Homework: 11:30 - 12:00 NOON

We do have class  
on snow days,  
because we are  
online!



Worcester Public Schools calendar  
(Holidays and Vacation weeks are the same)

Get the calendar in your language!



- PDF [English \(PDF\)](#)
- PDF [Shqipe \(PDF\)](#)
- PDF [العربية \(PDF\)](#)
- PDF [नेपाली \(PDF\)](#)
- PDF [Português \(PDF\)](#)
- PDF [Español \(PDF\)](#)
- PDF [Twi \(PDF\)](#)
- PDF [Tiếng Việt \(PDF\)](#)

# AGENDA (WHAT WE WILL DO THIS WEEK)

## Unit: Careers

- News & Housekeeping
- Journal Writing
- Dream Jobs - reading - continued
- Occupations - continued
- Mini Lessons
  - Prepositions of Place with Household Appliances
  - Reading and writing numbers
  - Make a sandwich\*
- *Helping Verbs - be, do, have - review as needed*

# OBJECTIVES – AT THE COMPLETION OF THIS WEEK'S UNIT LESSONS STUDENTS WILL BE ABLE TO:

## Unit: Careers

- Write complete sentences with correct grammar sequence
  - Answer comprehension questions about a reading
  - Identify and pronounce names of common job occupations
- 

- Use the correct prepositions for the location of things in speaking and writing
- Use correct prepositions for time in speaking and writing
- Identify common household appliances and items in the kitchen
- Identify sequence of steps words

\*Time permitting

# STANDARDS – AT THE COMPLETION OF THIS UNIT’S LESSONS STUDENTS WILL BE ABLE TO:

## Writing

- W3C.3a. Show knowledge of basic grammar to construct simple sentences (including negative sentences and questions), such as: verbs to convey a sense of past, present, and future
- W4A.2b. Respond to simple prompts (e.g., the five W questions, quotes) to formulate ideas.
- W4A.3a. Discuss information and ideas gleaned from reading, listening, or experience.

## Reading

- R1A.4a. Read and comprehend a range of authentic or level-adapted multi-paragraph informational texts, such as: ATM receipts.
- R1B.3a. Identify the main purpose of a text, including what the author wants to answer, explain, or describe.
- R1B.3b. Ask and answer five W questions about the topic, stated main idea, and key details in a text.
- R1B.3c. Distinguish what a text says explicitly from inferences.
- R1B.3f. Read aloud simple paragraphs with, on successive readings, sufficient accuracy and appropriate intonation.
- R1B.4f. Read aloud connected text composed primarily of simple and compound sentences with sufficient accuracy, and appropriate intonation and phrasing.
- R4A.1b Make predictions about the content of text based on pictures or prior knowledge of the context
- R4B.3d. Use a placeholder word (e.g., “something”) for an unknown word and continue reading.
- R5.2a Use information gained from visuals (e.g. pictures, illustrated maps) to support comprehension.

## Listening & Speaking

- L/S1A.3a. Carry out listening tasks that require the listener to comprehend short connected statements and questions on familiar topics when spoken slowly and clearly, such as: • short descriptive updates (e.g., update from co-worker at shift change)• digital messages (e.g., TV news and weather, phone messages)• short sequence of events or simple two- or three-step instructions.
- L/S1A.3b. Carry out speaking tasks that require a short, simple explanation related to expressing needs, feelings, or information in familiar contexts, such as: • explaining basic needs, experiences, or preferences • leaving phone messages with appropriate level of detail (e.g., for school or work)• describing a problem clearly
- L/S3B.1c. Distinguish between yes/no and information questions.
- L/S3B.3b. Use word order that consistently approximates standard English.
- L/S5.1b. With support, use provided media to extend practice of oral English

## Unit: Careers

- Dream Jobs (ellii)
  - Occupations (ellii, opdome, [Games to Learn English](#))
- 
- Schedules\*
  - Organization Charts\*
  - Prepositions of Place with Household Appliances\*
  - Read an Appointment Card\*
  - Helping Verbs - Lessons (Be, Do, Have, video, mmmEnglish)
  - Images\*

\*See Resources slide for additional links

# RESOURCES

## Unit: Careers

### Lessons:

Dream Job (ellii)

Occupations (ellii, opdome, Games to Learn English)

### Mini Lessons

#### Schedules

Organizational Charts Washing Machine Dimensions (video, HomeDepot.com and slides)

Prepositions of Place (elli, Fun Grammar Lessons and Grammar Worksheets)

Prepositions of Place with Household Appliances (slides)

Writing numbers (slides)

Read an Appointment Card (slides)

Making a Sandwich (slides)

### Images

Washer and Dryer Dimensions (video, and Home Depot.com) / Household Appliances (iStock, 7esl.com, see slides)

Making a Sandwich (google search images)/ Occupations (opdome, Games to Learn English, ellii) / Kitchen - journal writing prepositions

The school tests each your progress in English each semester.

Pre-Test (after 60 hours of classes)

Post-Test (end of semester)



Worcester Adult Learning Center  
24 Chatham Street, Worcester, MA

Teacher Alys will call you AND text you to schedule your test.

Please check your voicemail and text her back. Include what day you would like to take your test.

## Testing times:

- Monday, Tuesday, Wednesday, Thursday or Friday mornings: 9:00 AM – 12:00 NOON
- Tuesday and Thursday nights: 5:00 – 6:00 PM



Worcester  
Adult Learning Center

NEWS





MAY 2024

SUNDAY	MONDAY	TUESDAY	WEDNESDAY	THURSDAY	FRIDAY	SATURDAY
28	29	30	1	2	3	4
5	6	7	8	9	10	11
12	13	14	15	16	17	18
19	20	21	22	23	24	25
26	27	28	29	30	31	1

Holidays and Observances: 5: Cinco de Mayo, 12: Mother's Day, 27: Memorial Day

Homemade  
with love

♥ Mother's Day  
May 12

---

Memorial Day  
Weekend  
May 24 - 27  
School is closed



# ESOL Online Summer 2024

Day Class only

Tuesday, Wednesday, Thursday

9:00 - 11:30 AM

**5 Weeks**

**Dates:**

June 25, 26, 27

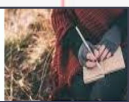
July 9, 10, 11

July 16, 17, 18

July 23, 24, 25

July 30, 31, August 1

*\* No classes week of July 4th*



# JOURNAL WRITING

Write complete sentences. Try to include: prepositions & be' verbs.

1. What's today's date? *Day of the Week, Month Date, Year*

2. What's the temp today? \_\_\_\_\_ .

3. How's the weather today?

4. What do you plan to cook for dinner tonight?

*I plan to... / For dinner tonight, I plan to... /My plan is to...*

5. What is your schedule for today?

*I plan to... / Today's schedule is... / My schedule today is...*

## Vocabulary

**Plan** (verb) = action = to plan: decide on and arrange in advance

**Plan** (noun) = a thing = a plan: an intention or decision about what one is going to do

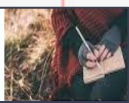
**Schedule** (verb) = action = arrange or plan (an event) to take place at a particular time.

**Schedule** (noun) = a thing = a plan describing what someone is going to do and when they will do it

## Be Verb - Examples

	PAST	PAST CONTINUOUS	PRESENT	PRESENT CONTINUOUS	FUTURE
I	was	was + being OR + ___ing	am	am + being OR + ___ing	(will) / will be /(going to)
He/She/It	was	was + being OR + ___ing	is	is + being OR + ___ing	(will) / will be /(going to)
You/We/They	were	were + being OR + ___ing	are	are + being OR + ___ing	(will) / will be /(going to)

Write



# JOURNAL WRITING

Write complete sentences. Try to include: prepositions & be' verbs.

## Vocabulary

- island (noun)
- kitchen island
- built-in (adjective)
- cabinet /s
- lower, upper, overhead cabinets
- overhead lighting
- faucet (noun)
- goose neck faucet
- shade /s (noun)
- window shade
- blind / s (noun)
- window blind
- hood (noun)
- vent /s /-ed /-ing
- vent (noun)
- vase /s (noun)

<https://www.mcgranitecountertops.com/granite-countertops-smyrna>



## Be Verb - Examples

	PAST	PAST CONTINUOUS	PRESENT	PRESENT CONTINUOUS	FUTURE
I	was	was + being OR + ___ing	am	am + being OR + ___ing	(will) / will be /(going to)
He/She/It	was	was + being OR + ___ing	is	is + being OR + ___ing	(will) / will be /(going to)
You/We/They	were	were + being OR + ___ing	are	are + being OR + ___ing	(will) / will be /(going to)

# Before Reading

## Text features

What text features do you see?

- Title
- Headings
- Image
- Caption
- Bold words

## Purpose

What is the purpose of this text?

- Entertain  Inform  Persuade (opinion)

## Prediction

What is your prediction? What is the text about?

---

# Dream Jobs

## Discussion Starters

💡 Int 🎓 Teens & Adults



Students read about and discuss the importance of being passionate about one's work. They practice using alternative words for "like" and "dislike."

# Dream Jobs – Discussion

1. Who has the best job in the world?
2. Who has the worst job in the world?
3. What is more important in a job, money or happiness?
4. Do you *work to live* or do you *live to work*?
5. What is your dream job?

# Dream Jobs – Vocabulary

passionate

valued

attitude

pest control

plumber

challenged

high turnover

stepping stone

colleague

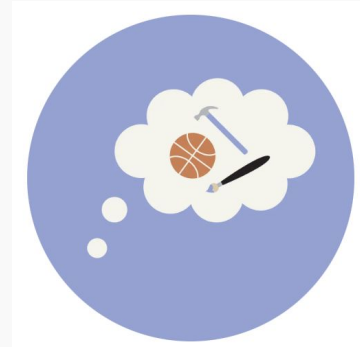
rut

[Dream Jobs \(ellii, video\)](#)

# Reading 1

## DREAM JOBS

Are you passionate about your work?



How important is it to love your work? Some people say it's the key to happiness. You spend so much time at your job that it has to be something you're **passionate** about. Other people say you have to at least feel **valued** in your workplace. Your dream job may still be a hobby, but the work you do must make a difference in people's lives.

## Reading 2

### DREAM JOBS

Are you passionate about your work?



Is it possible to adore your job no matter what you do? Your **attitude** toward your job can go a long way. A supportive **pest control** worker or **plumber** improves the quality of life of his customers. Feeling **challenged** on the job is important. A job that requires very little effort is hard to do for a long time. This is why some positions have a **high turnover**. Your night job may be a **stepping stone** to your future career.

## Reading 3

### DREAM JOBS

Are you passionate about your work?



The people we work with have a lot to do with job satisfaction, too.

You may be passionate about the work but hate your boss or coworkers.

On the other hand, you may work from home but miss interaction with **colleagues.**

## Reading 4

### DREAM JOBS

Are you passionate about your work?

The money you earn on the job is also important.

Do you earn enough money to meet your basic needs? Is there a little left over for your savings and recreation account? If you think you deserve more than you earn, you may be miserable at work. Asking for a raise may be your solution. Some people get **stuck in a rut** at work. They don't leave a **dead-end job** because they get too comfortable.



# Reading 5

## DREAM JOBS

Are you passionate about your work?

Think back to when you were a small child. What was your answer when people asked what you wanted to be when you grew up? Some experts say that our childhood dreams are the jobs we are meant to do.

# Reading Comprehension – Questions

## DREAM JOBS

1. What does a person need to have in order to enjoy his or her job?
2. Why does the reading mention a plumber?
3. According to the reading, what may be a stepping stone to a future career?
4. What do some self-employed workers miss?
5. What advice is offered at the end of the reading?

# Careers - Occupations



[Occupation - Flashcards \(ellii\)](#)

[Occupations \(opdome, Jobs 1 & 2\)](#)

[Jobs \(GamestoLearningEnglish\)](#)



mini  
lessons

# Reading Receipts



## LiveWorksheets

Old Navy	
999 Upper Wentworth St , Hamilton	
(905) 318-4506	
06/13/20	9:55
*****	
shorts .....	17.70
socks .....	9.30
SUBTOTAL	27.00
HST 13%	3.51
TOTAL	30.51
Debit	

- 1) What is the name of the store?
- 2) When did she buy the items?
- 3) What did she buy?
- 4) How much was the sales tax?
- 5) How much was the total?
- 6) How did she pay?

## ATM Receipts

### Real-World Reading

💡 Low Int 🗣️ Teens & Adults

In this resource, students learn vocabulary related to using a bank machine. They read three ATM receipts and answer comprehension questions. Includes an assessment task.



# Toaster Oven Safety



# Toaster Oven Safety Instructions

## SAFETY INFORMATION

### ⚠ DANGER

**DANGER** - Immediate hazards which **WILL** result in severe personal injury or death

### ⚠ WARNING

**WARNING** - Hazards or unsafe practices which **COULD** result in severe personal injury or death

### ⚠ CAUTION

**CAUTION** - Hazards or unsafe practices which **COULD** result in minor personal injury

## IMPORTANT SAFETY INSTRUCTIONS

### ⚠ WARNING

When using electrical appliances, basic safety precautions should be followed, including the following

1. Read all instructions
2. Do not touch hot surfaces. Use handles or knobs.
3. To protect against electrical shock do not immerse cord, plugs, in water or other liquid.
4. Close supervision is necessary when any appliance is used by or near children.
5. Unplug from outlet when not in use and before cleaning. Allow to cool before putting on or taking off parts.
6. Do not operate any appliance with a damaged cord or plug or after the appliance malfunctions or has been damaged in any manner. Return appliance to the nearest authorized service facility for examination, repair, or adjustment.
7. The use of accessory attachments not recommended by the appliance manufacturer may cause injuries.

## Toaster Oven Safety



## Toaster Oven Safety Instructions

### SAFETY INFORMATION

#### ⚠ DANGER

**DANGER** - Immediate hazards which **WILL** result in severe personal injury or death

#### ⚠ WARNING

**WARNING** - Hazards or unsafe practices which **COULD** result in severe personal injury or death

#### ⚠ CAUTION

**CAUTION** - Hazards or unsafe practices which **COULD** result in minor personal injury

### IMPORTANT SAFETY INSTRUCTIONS

#### ⚠ WARNING

When using electrical appliances, basic safety precautions should be followed, including the following

1. Read all instructions
2. Do not touch hot surfaces. Use handles or knobs.
3. To protect against electrical shock do not immerse cord, plugs, in water or other liquid.
4. Close supervision is necessary when any appliance is used by or near children.
5. Unplug from outlet when not in use and before cleaning. Allow to cool before putting on or taking off parts.
6. Do not operate any appliance with a damaged cord or plug or after the appliance malfunctions or has been damaged in any manner. Return appliance to the nearest authorized service facility for examination, repair, or adjustment.
7. The use of accessory attachments not recommended by the appliance manufacturer may cause injuries.



What is the first thing you should do?

- A. Unplug the toaster
- B. Read all the instructions
- C. Use the handle and knobs
- D. Make toast.

Number 4 says close supervision is necessary. What does **NECESSARY** mean?

- A. Wanted
- B. Needed
- C. Available
- D. On time

Unplug your toaster except when you are doing what?

- A. Toasting
- B. Cleaning
- C. Fixing
- D. Not using

## Classified AD

## For sale

**Children's Roller Skates**

These skates are almost new. Size 7 for girl or boy.  
They are white with red wheels. \$20.00

---

**Outdoor Storage Bin**

This large bin is perfect for storing toys and outdoor cushions.  
It is dark grey and looks good in any backyard. \$35.00

---

**Small bike**

24 inch blue bike that is like new. It has hand brakes,  
a basket and a light on the front. \$40.00

---

How much does the bike cost?

- A. Thirty-five dollars
- B. Forty dollars
- C. Twenty dollars
- D. Fifteen dollars

What size are the roller skates ?

- A. Six
- B. Eight
- C. Four
- D. Seven



mini  
lesson

**Prepositions  
of Place**

# What are Prepositions?

Prepositions are words that show things like:

**time = at 2:00**

**place = on the table**

**direction = around the corner**

# Prepositions of Place

## Sentence Patterns

pattern 1

The + noun + verb +  
preposition + the + noun



The flowers are **on** the table.

pattern 2

There + verb + a + noun +  
preposition + the + noun



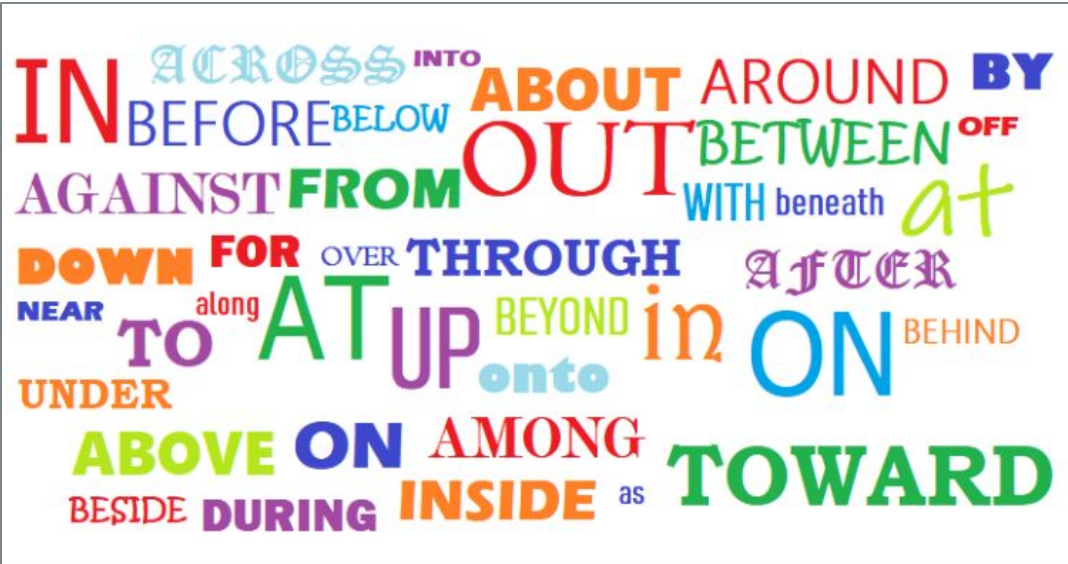
There is a cat **under** the bed.

mini  
lesson

# Prepositions Practice

IN ACROSS INTO ABOUT AROUND BY  
BEFORE BELOW OUT BETWEEN OFF  
AGAINST FROM WITH beneath at  
DOWN FOR OVER THROUGH AFTER  
NEAR along TO AT UP BEYOND in ON BEHIND  
UNDER onto  
ABOVE ON AMONG  
BESIDE DURING INSIDE as TOWARD

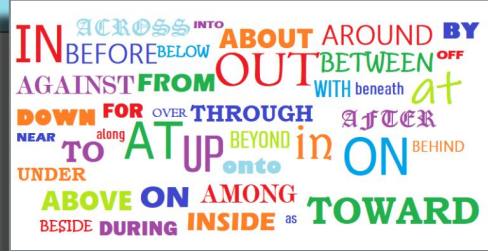
# Prepositions Practice



1. What words do you remember?
2. How many of them are red?
3. How many of them are dark blue?
4. How many of them are light blue?
5. How many of them are dark green?
6. How many of them are lime green?
7. How many of them are orange?
8. How many of them are purple?
9. Which three words do you see twice?
10. Can you use the preposition \_\_\_\_ in a sentence?

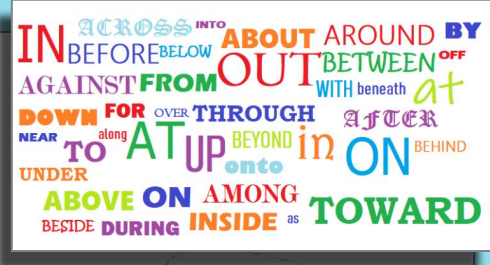
(YOU CAN REPEAT THIS QUESTION.)

# Prepositions of Place



1. Where is the clothes dryer located?
2. Where is the washing machine?
3. Where is the refrigerator?

# Prepositions of Place

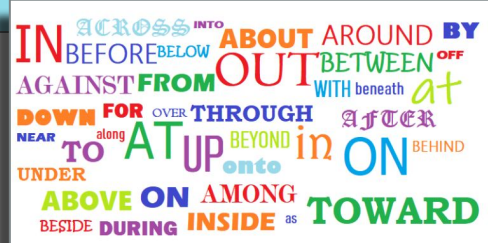


1. Where is the air conditioner?
2. Where is the oven?
3. Where is the dishwasher?





# Prepositions of Place



1. What item is **farthest away** from the kettle?
2. What item is **nearest** the water purifier?
3. Where is the electric kettle located?



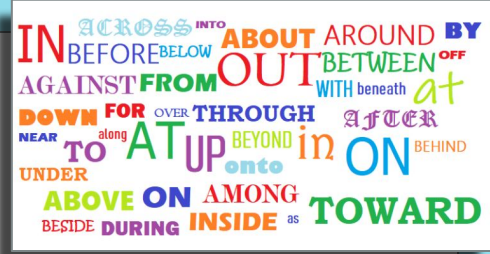
Kettle

Water cooker (UK)  
/Electric kettle  
/Hot pot (US)

Water purifier

Water filter

# Prepositions of Place



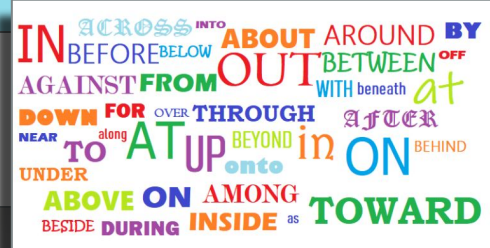
electric kettle  
microwave  
space heater  
or radiator



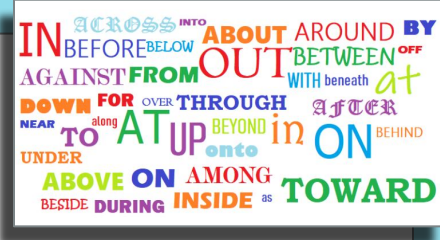
1. Where is the meat grinder located?
2. What is **on top of** the shelf?
3. What is below the meat grinder?
4. What is **next to** radiator?
5. What **goes into** the washing machine?
6. What **goes into** an electric kettle / hot pot?

# Prepositions of Place

1. Where is the vacuum cleaner?
2. Where is the vent hood for the stove?
3. Where is the refrigerator?
4. What household appliance is **in front of** the fridge?



# Prepositions of Place



**Garbage Disposal**

1. What is the person doing?
2. Where is the food going?
3. Where is the bottom of the garbage disposal located?



Quiz  
Time



# *auxiliary verbs*

'helping' verbs

So why are they so important?

*Practice speaking English every day!*

See you NEXT CLASS!

*Click on ....*

**Leave Meeting**

EXTRA SLIDES

## DOWNLOAD A LANGUAGE APP

<u>Awabe</u>	<u>Hello Talk</u>	<u>Memrise</u>
<u>Busuu</u>	<u>Lingbe</u>	YouTube
<u>Duolingo</u>	<u>Learn English Daily</u>	<ul style="list-style-type: none"><li>• <u>English with Anna</u></li><li>• <u>Teacher Alisha</u></li><li>• <u>Teacher Keith</u></li><li>• <u>Teacher Rebecca</u></li><li>• <u>Teacher Tiffany</u></li><li>• <u>Films in English</u></li></ul>
<u>FluentU</u> (online/\$)	<u>Lyrics Training</u> (songs)	
<u>Hello English</u>	<u>Mango</u>	

What app are you using?

Practice speaking English 20 minutes every day.

# IMPORTANT INFORMATION



**Worcester  
Adult Learning Center**

Phone: 508-799-3090

24 Chatham Street,  
Worcester, MA 01609

## Teacher Marianne

Phone & Text: 774-551-6381

## Kristin: Career Navigator

Text: 508-556-0713

Email: careers.walc@gmail.com

## Zoom

Meeting ID: 496 900 0061

Password: 4sU7GC

## Crystal: Student Advisor

Respond to REMIND.

Office hours: Tues, Wed, Thurs - 11:30am - 12:30pm

## Leslie: Student Advising (Online Students)

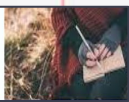
Wed and Thurs - 12:00pm - 1:00pm

By appointment

Email: lfbowden08@gmail.com

- School
- Phone
- Zoom

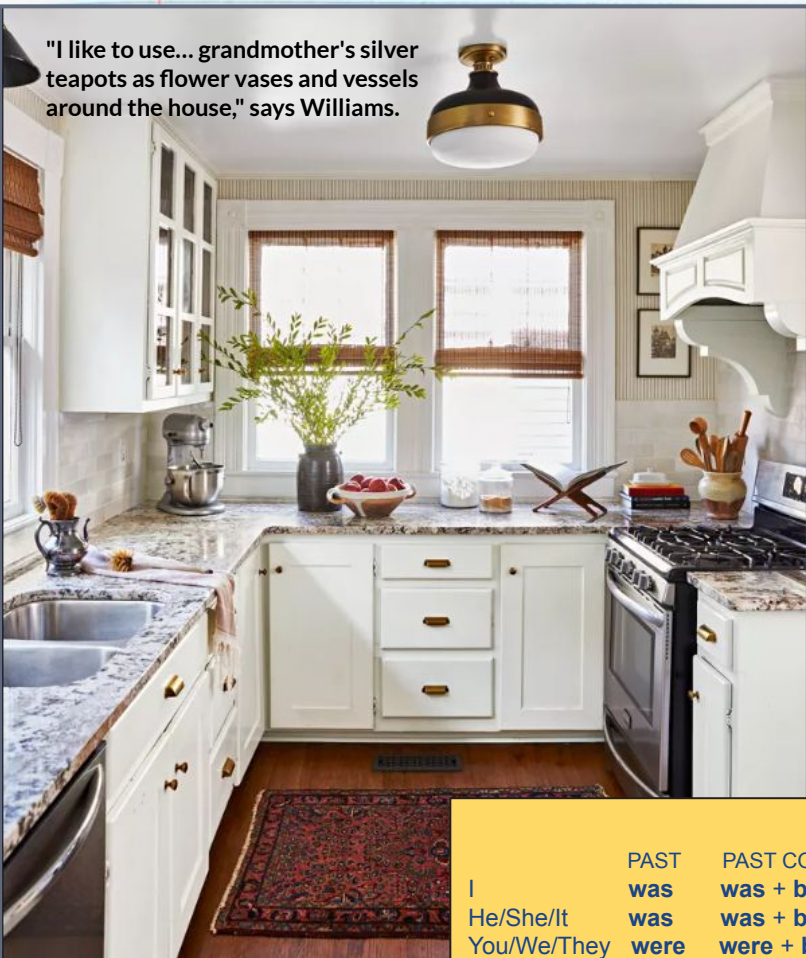
Write



# JOURNAL WRITING

Write complete sentences. Try to include: prepositions & be' verbs.

"I like to use... grandmother's silver teapots as flower vases and vessels around the house," says Williams.



## Vocabulary

silver (adj / noun)

teapot /s (noun)

vase /s (noun)

vessel /s (noun)

mix /es /-ing

mixer (noun)

jar /s /-ed /-ing

jar (noun)

shade /s (noun)

blind / s (noun)

hood (noun)

vent /s /-ed /-ing

vent (noun)

kitchen or  
cooking utensil /s  
(noun)

silverware (noun)

Write about this picture.

What do you see?

Tell me more...

## Be Verb - Examples

	PAST	PAST CONTINUOUS	PRESENT	PRESENT CONTINUOUS	FUTURE
I	was	was + being OR + ___ing	am	am + being OR + ___ing	(will) / will be /(going to)
He/She/It	was	was + being OR + ___ing	is	is + being OR + ___ing	(will) / will be /(going to)
You/We/They	were	were + being OR + ___ing	are	are + being OR + ___ing	(will) / will be /(going to)